



Supernovae & Supernova Remnants

STELLAR EXPLOSIONS



ORIGIN OF
THE
ELEMENTS



TRIGGER
STAR
FORMATION



DYNAMICS
OF THE
GALAXY

Gamma-ray emission related to nucleosynthesis and matter- antimatter annihilation

§ Diffuse gamma-ray line (and also continuum) emission related with “radioactivities in the Galaxy”

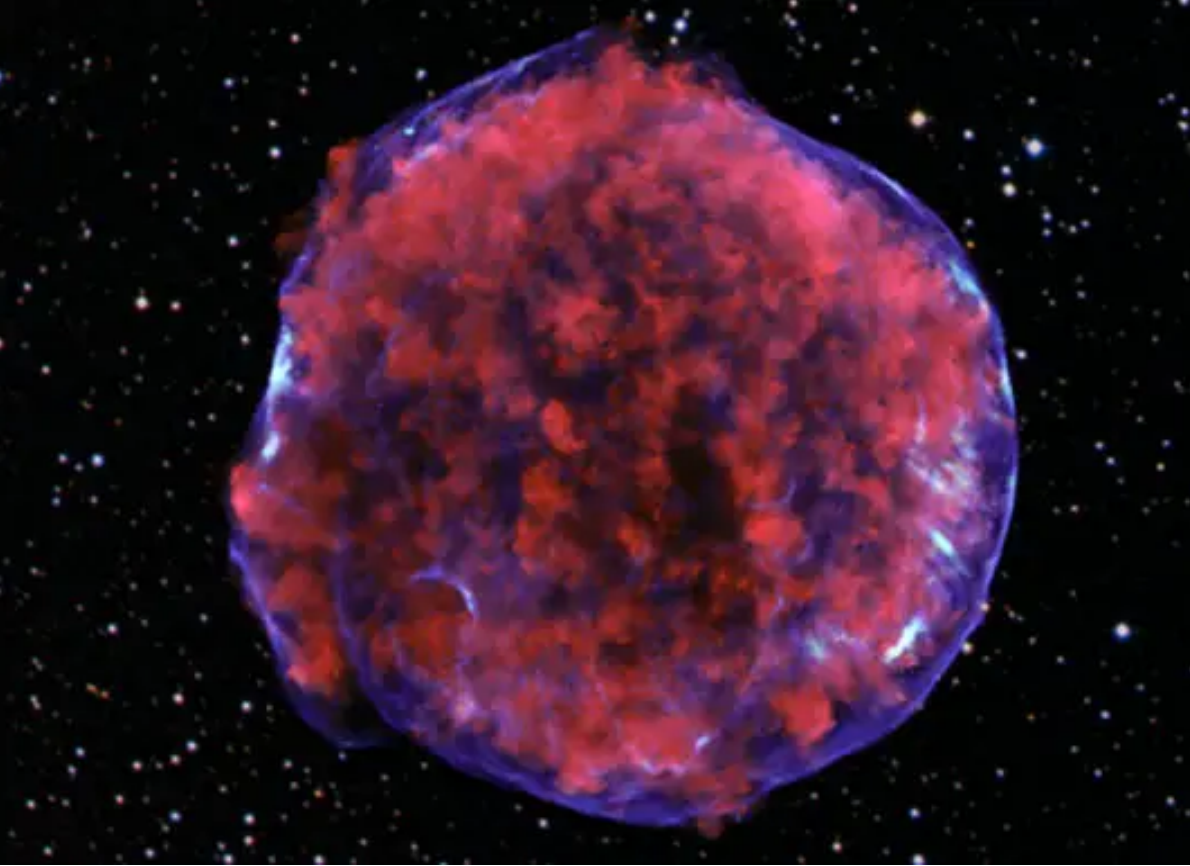
Ø Electron-positron annihilation: 511 keV line plus positronium continuum

Ø ^{26}Al and ^{60}Fe : related with massive stars and their explosions

Ø ^{44}Ti : related with supernova remnants

X-rays and gamma-rays from stellar explosions

- Explosions: novae, supernovae and their remnants:
 - Ø Nucleosynthesis and ejection of radioactive nuclei:
gamma
 - Ø Fast ejecta interacting with CSM (shocks), particle acceleration (inverse Compton, synchrotron radiation):
X and HE gamma
 - Also in non-explosive phenomena radioactive nuclei are formed: nucleosynthesis in stars ejected into the ISM (massive stars, AGB)
-



Core-Collapse Supernova
(Remnant: Neutron Star or Black Hole)

Thermonuclear Supernova
(No Remnant)

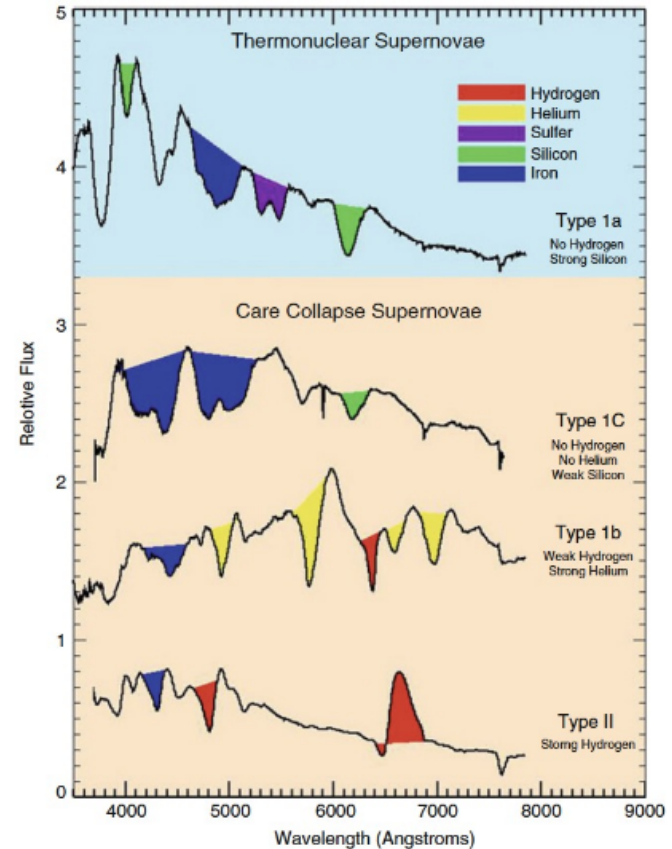
Summary of supernova types

Thermonuclear Supernovae (SN Ia):

- white dwarf explosion
- no remnant
- no H
- origin of explosion: thermonuclear energy

Core collapse supernovae / gravitational SNe (SN II, Ib, Ic)

- massive star explosion
- remnant: neutron star or black hole
- H (in general)
- origin of explosion: gravitational energy



Synthesis of radioactive isotopes in supernovae

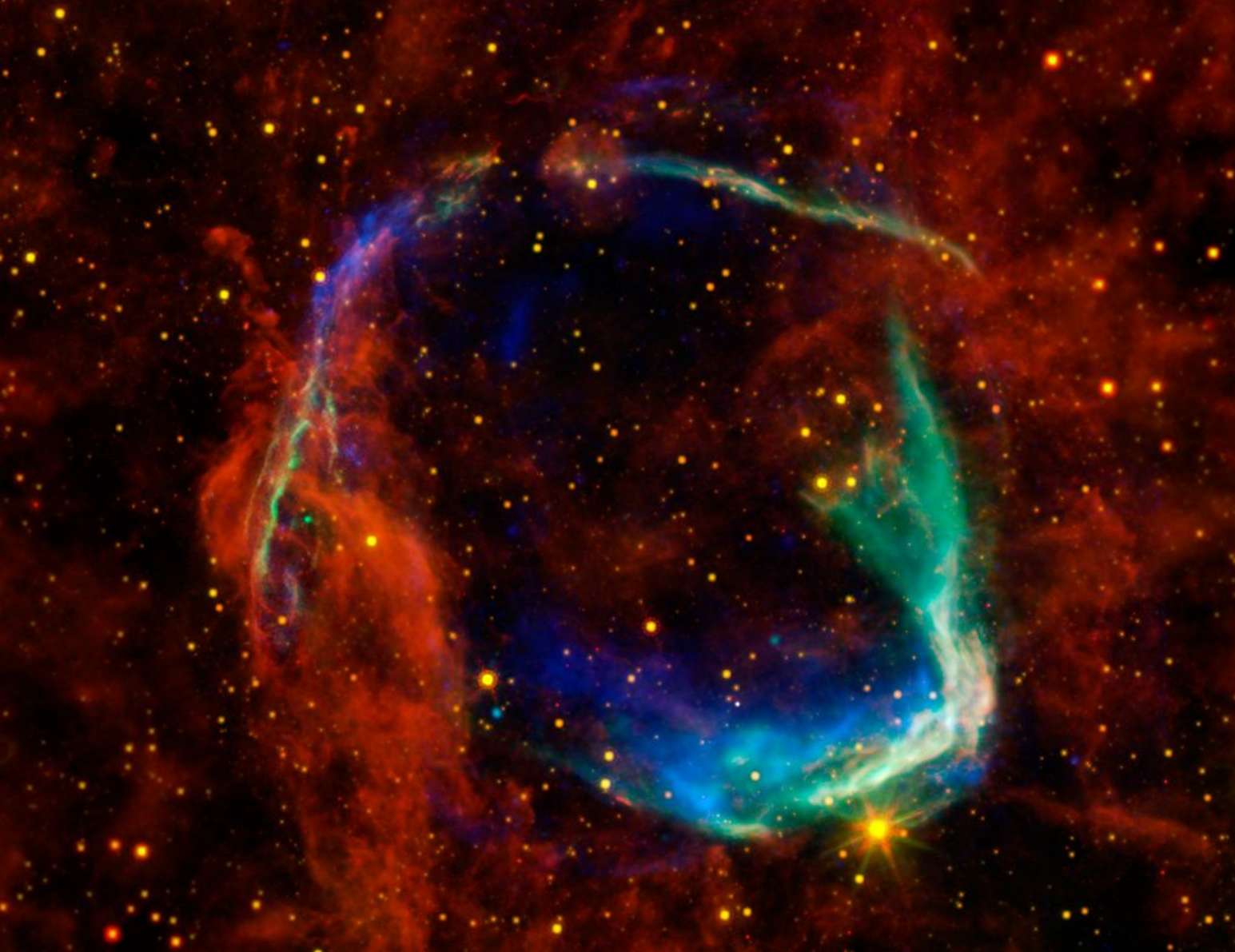
Short-lived isotopes: $^{56,57}\text{Ni}$ (all), ^{44}Ti (SN II and Ib/c; also in sub-Chandra SN Ia), ^{60}Co (SN II and Ib/c)

- diagnostic of models: observation of **individual objects**
- **γ -ray lines:** $^{56,57}\text{Ni}$ and ^{44}Ti yields (better in SN Ia; detected in SN 1987A)
 - bolometric light curves

Long-lived isotopes: ^{26}Al and ^{60}Fe (SN II and Ib/c)

- diagnostic of models: observation of **accumulated emission in the Galaxy**

γ -ray line astronomy could provide crucial insights on supernova models

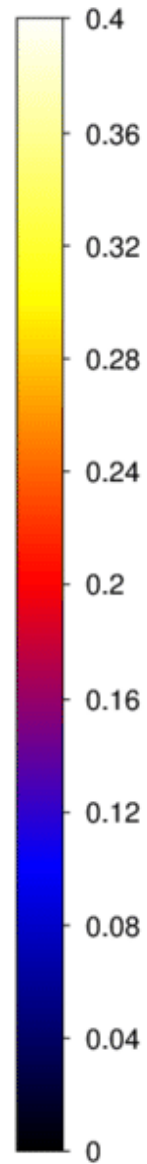
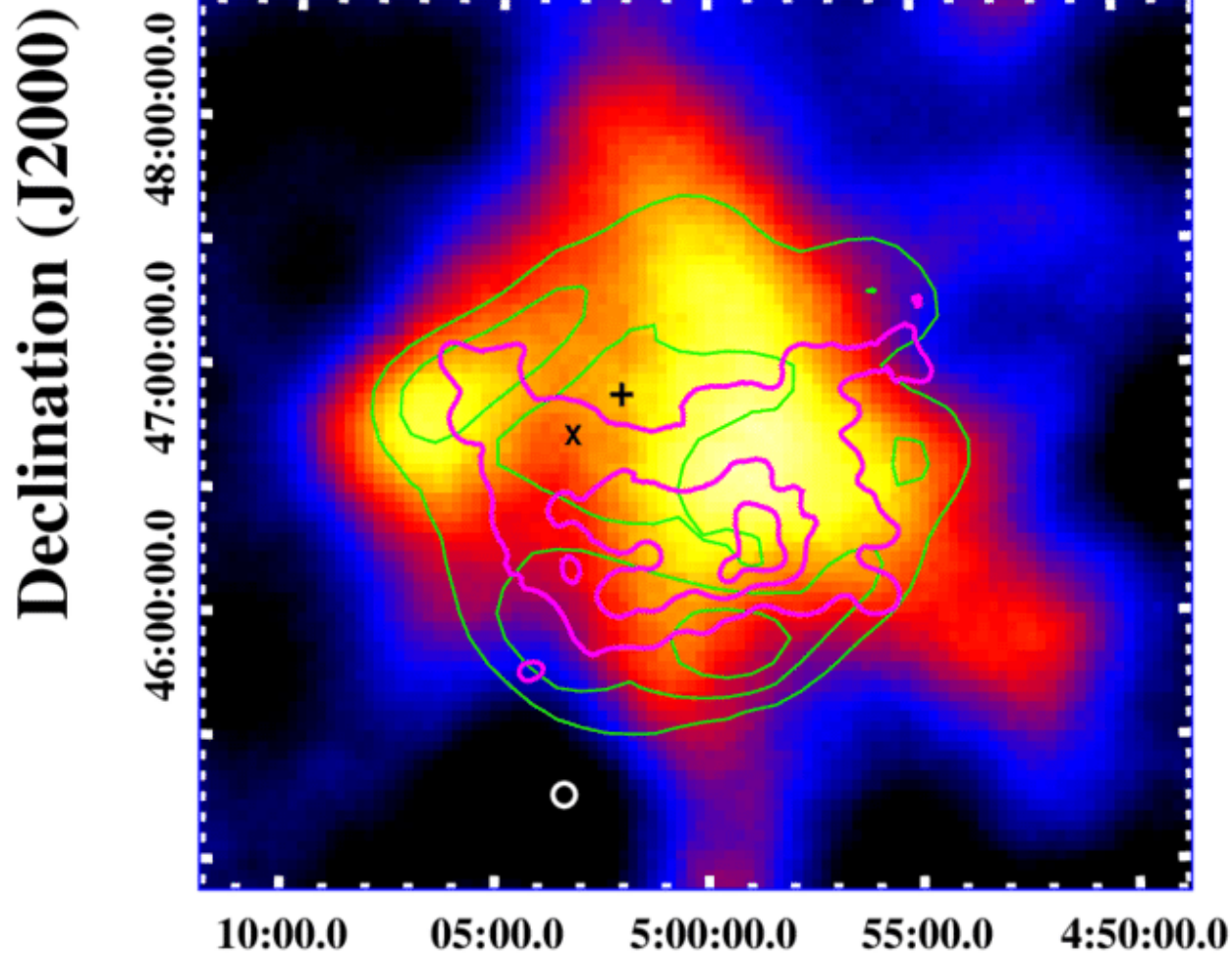


SN 185

First supernova
recorded (185
AD, by Chinese
astronomers)

Possibly a Type
Ia supernova

Right Ascension (J2000)



HB9
Possibly the first
supernova ever
recorded by
humans

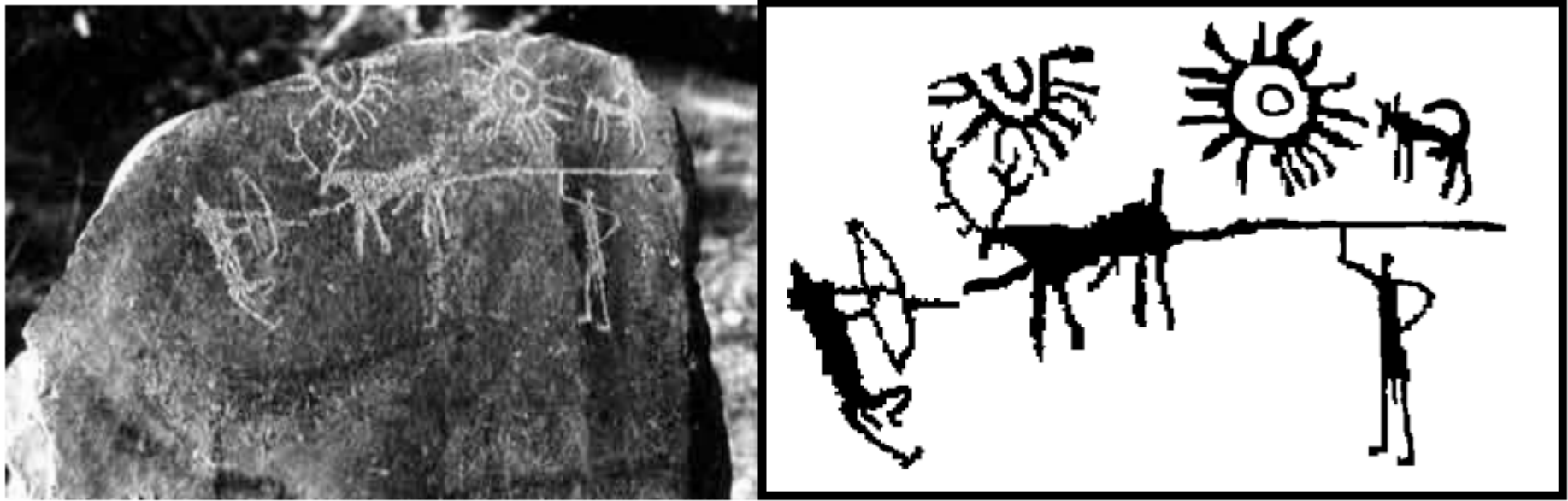
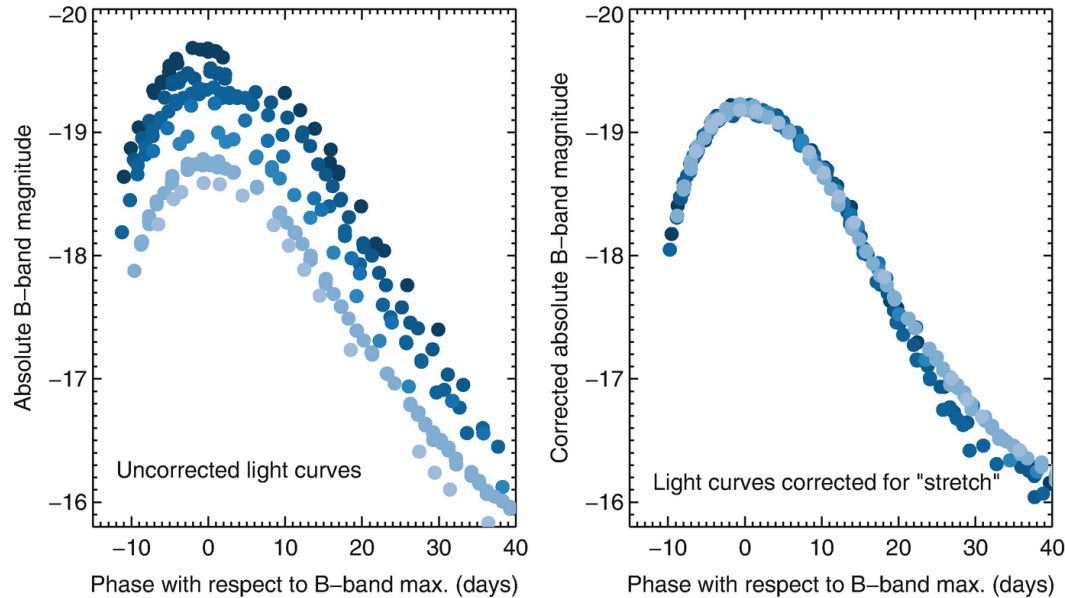


Figure 1: Photograph of stone Carving from Burzahom (Courtesy IGNCA) along with a sketch of the same.

Some work Joglekar, Vahia & Sule (2011) suggests this supernova was recorded in cave paintings during the neolithic in 4,500 +/- 1,000 BC

Thermonuclear Supernovae (Type Ia)

Type Ia Supernovae are Standard Candles



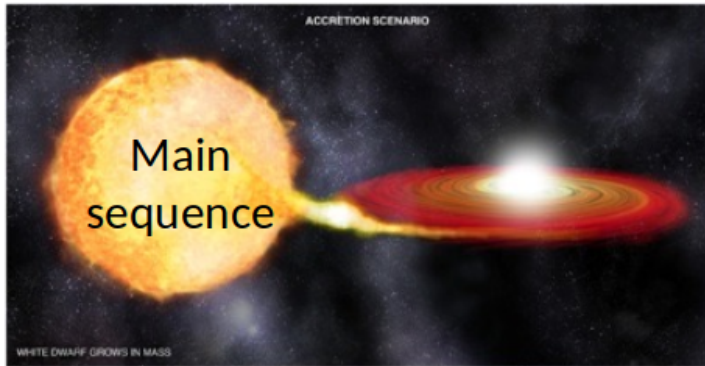
The maximum B-band luminosity is linked to how fast the light curve declines in the 15 days following B maximum (Δm_{15}). Brighter supernovae decline more slowly, and fainter supernovae decline more rapidly. This is known as the luminosity-decline rate relation. This relation is used to “scale” the lightcurve. After this scaling, the peak luminosity can be used as a *standard candle*.

Stellar explosions of White Dwarfs

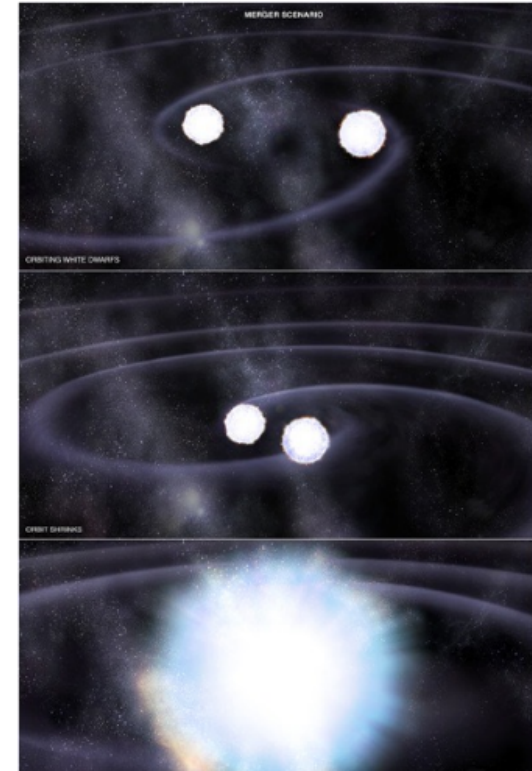
- **Endpoints of stellar evolution** ($M < 10M_{\odot}$): no E_{nuc} available; compression until electrons become degenerate
- **Chemical composition:** He, CO, ONe; masses: typical $0.6 M_{\odot}$, maximum: $M_{\text{Chandrasekhar}} (\sim 1.4M_{\odot})$
- **When isolated**, they cool down to very low L ($\sim 10^{-4.5}L_{\odot}$):
➔ “fossils” allowing to do “stellar archeology” (age of the Galaxy, star formation rate)
- **When in interacting binary systems**, they can be “rejuvenated” and eventually explode

Stellar explosions: WDs in close binary systems Scenarios/Progenitors of SN Ia

Single degenerate:
WD+MS or WD+RG



Double degenerate: merging
of two white dwarfs



Favors Single Degenerate Scenario

PTF 11kx: A Type Ia Supernova with a Symbiotic Nova Progenitor

B. Dilday,^{1,2*} D. A. Howell,^{1,2} S. B. Cenko,³ J. M. Silverman,³ P. E. Nugent,^{3,4} M. Sullivan,⁵ S. Ben-Ami,⁶ L. Bildsten,^{2,7} M. Bolte,⁸ M. Endl,⁹ A. V. Filippenko,³ O. Gnat,¹⁰ A. Hoesli,¹² E. Hsiao,^{4,13} M. M. Kasliwal,^{12,13} D. Kirkman,¹⁴ K. Maguire,⁵ G. W. Marcy,³ K. Moore,² Y. Pan,¹ J. T. Parrent,^{1,15} P. Podsiadlowski,⁵ R. M. Quimby,¹⁶ A. Sternberg,¹⁷ N. Suzuki,³ D. R. Tytler,¹⁴ D. Xu,⁶ J. S. Bloom,³ A. Gal-Yam,¹⁸ I. M. Hook,⁵ S. R. Kulkarni,¹² N. M. Law,¹⁹ E. O. Ofek,¹⁸ D. Polishook,²⁰ D. Poznanski²¹

Science **337**, 942 (2012)

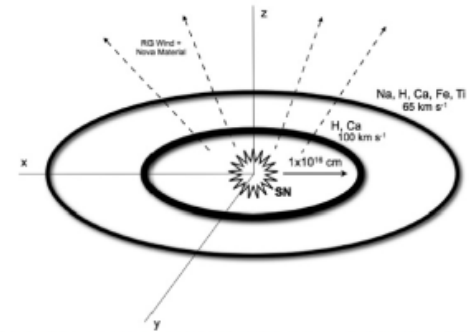


Fig. 4. Schematic showing the interpretation of the observations of PTF 11kx. In the symbiotic nova progenitor system, a red giant wind deposits CSM into the system, which is concentrated in the orbital plane. Episodic nova events further shape the CSM, resulting in expansion velocities of ~ 50 to 100 km s^{-1} . There is an inner region of material containing at least H and Ca, moving at $\sim 100 \text{ km s}^{-1}$, surrounded by more distant material containing H, Ca, Na, Fe, Ti, and He, moving at $\sim 65 \text{ km s}^{-1}$. The presence of hydrogen in the inner region is inferred from the onset of emission, concurrent with the onset of Ca II emission. This geometry, and the delay in the onset of CSM emission, is consistent with a relatively recent nova whose ejecta are sweeping up the CSM and decelerating. The inner boundary of CSM is at a distance of $\sim 10^{16} \text{ cm}$, as determined from the onset of interaction.

There is a consensus that type Ia supernovae (SNe Ia) arise from the thermonuclear explosion of white dwarf stars that accrete matter from a binary companion. However, direct observation of SN Ia progenitors is lacking, and the precise nature of the binary companion remains uncertain. A temporal series of high-resolution optical spectra of the SN Ia PTF 11kx reveals a complex circumstellar environment that provides an unprecedentedly detailed view of the progenitor system. Multiple shells of circumstellar material are detected, and the SN ejecta are seen to interact with circumstellar material starting 59 days after the explosion. These features are best described by a symbiotic nova progenitor, similar to RS Ophiuchi.



Explaining the Type Ia supernova PTF 11kx with a violent prompt merger scenario

Noam Soker,^{1★} Amit Kashi,² Enrique García-Berro,^{3,4} Santiago Torres^{3,4}
and Judit Camacho^{3,4}

We argue that the multiple shells of circumstellar material (CSM) and the supernovae (SNe) ejecta interaction with the CSM starting 59 d after the explosion of the Type Ia SN PTF 11kx are best described by a violent prompt merger. In this prompt merger scenario, the common envelope (CE) phase is terminated by a merger of a white dwarf (WD) companion with the hot core of a massive asymptotic giant branch star. In most cases, the WD is disrupted and accreted on to the more massive core. However, in the rare cases, where the merger takes place when the WD is denser than the core, the core will be disrupted and accreted on to the cooler WD. In such cases, the explosion might occur with no appreciable delay, i.e. months to years after the termination of the CE phase. This, we propose, might be the evolutionary route that could lead to the explosion of PTF 11kx. This scenario can account for the very massive CSM within ~ 1000 au of the exploding PTF 11kx star, for the presence of hydrogen, and for the presence of shells in the CSM.



Explaining the Type Ia supernova PTF 11kx with a violent prompt merger scenario

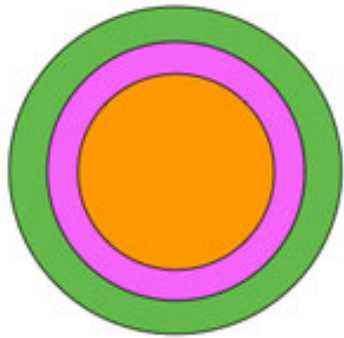
Noam Soker,¹* Amit Kashi,² Enrique García-Berro,^{3,4} Santiago Torres^{3,4}
and Judit Camacho^{3,4}

We argue that the multiple shells of circumstellar material (CSM) around the Type Ia supernovae (SNe) ejecta interaction with the CSM starting 59 d after the explosion of the Type Ia SN PTF 11kx are best described by a violent prompt merger scenario, the common envelope (CE) phase is terminated by the merger of the white dwarf (WD) companion with the hot core of a massive asymptotic giant branch star. In most cases, the WD is disrupted and accreted on to the massive star. However, in the rare cases, where the merger takes place when the WD is still in the core, the core will be disrupted and accreted on to the cooler WD. In such cases, the explosion might occur with no appreciable delay, i.e. months to years after the termination of the CE phase. This, we propose, might be the evolutionary route that could lead to the explosion of PTF 11kx. This scenario can account for the very massive CSM within ~ 1000 au of the exploding PTF 11kx star, for the presence of hydrogen, and for the presence of shells in the CSM.

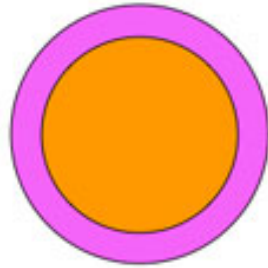
Discards the single degenerate scenario

Core-Collapse Supernovae (Type II, Ib, Ic)

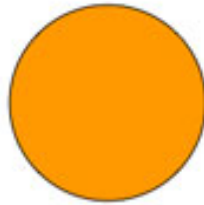
Core Collapse Supernovae



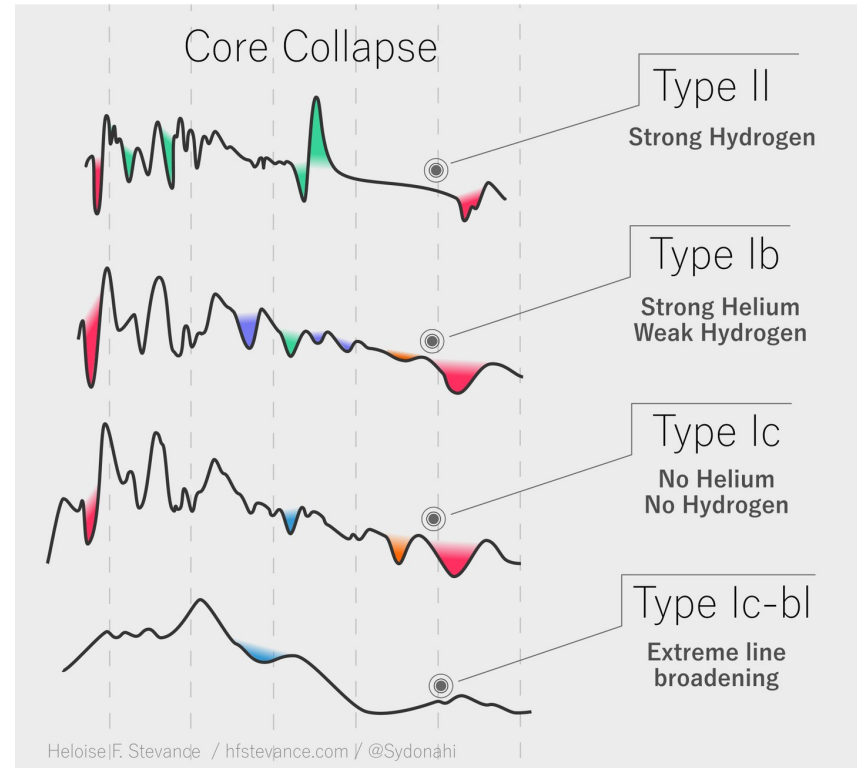
Type II
H and He shells



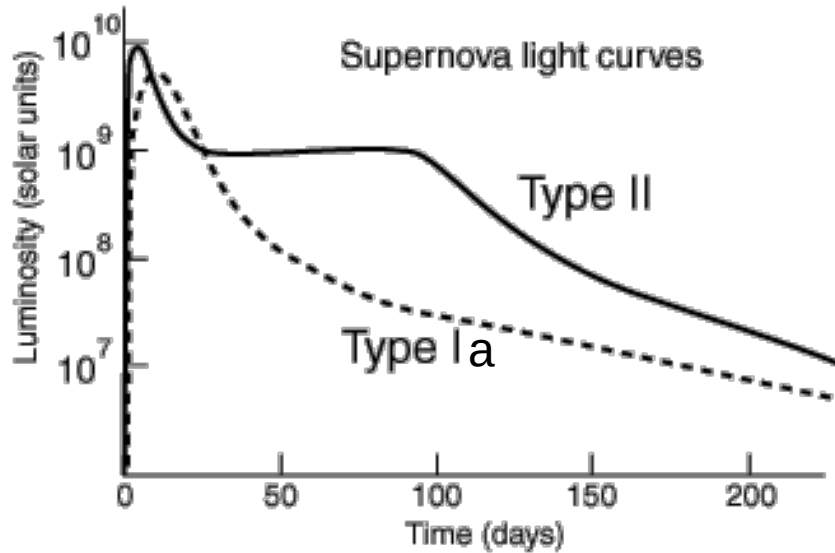
Type Ib
He shell only
no H shell



Type Ic
no H nor He
shells



Lightcurves



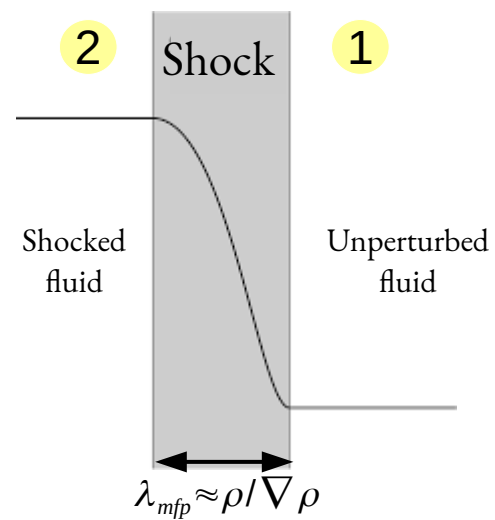
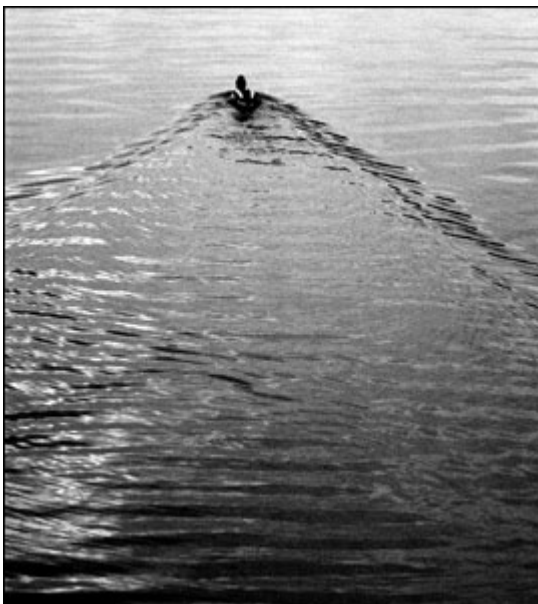
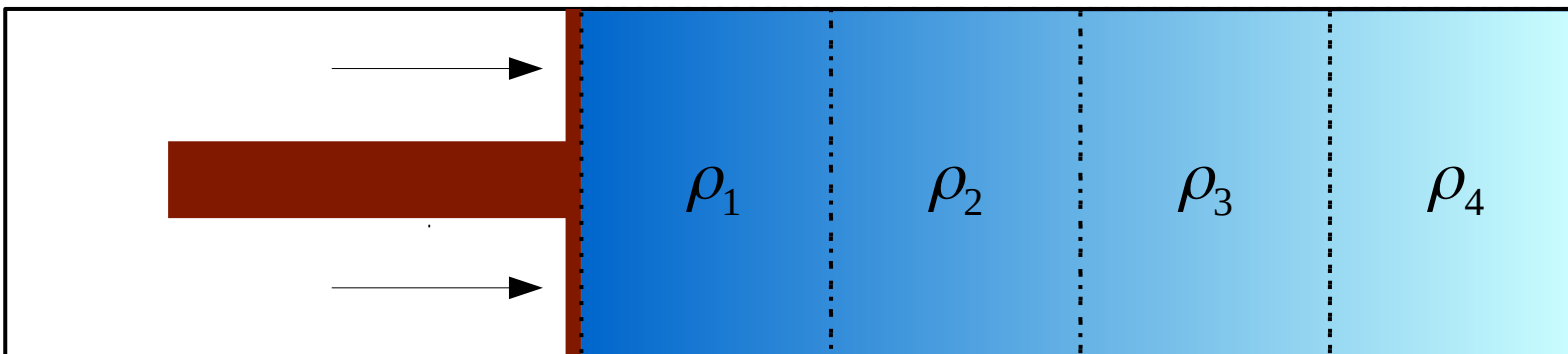
Adapted from Chaisson & McMillan

Core-collapse SNe show a **characteristic plateau** in their light curves a few months after initiation. This plateau is reproduced by computer models which assume that the energy comes from the expansion and cooling of the star's outer envelope as it is blown away into space. This model is corroborated by the observation of strong hydrogen and helium spectra for the Type II supernovae, in contrast to the Type Ia. There should be a lot of these gases in the extreme outer regions of the massive star involved.

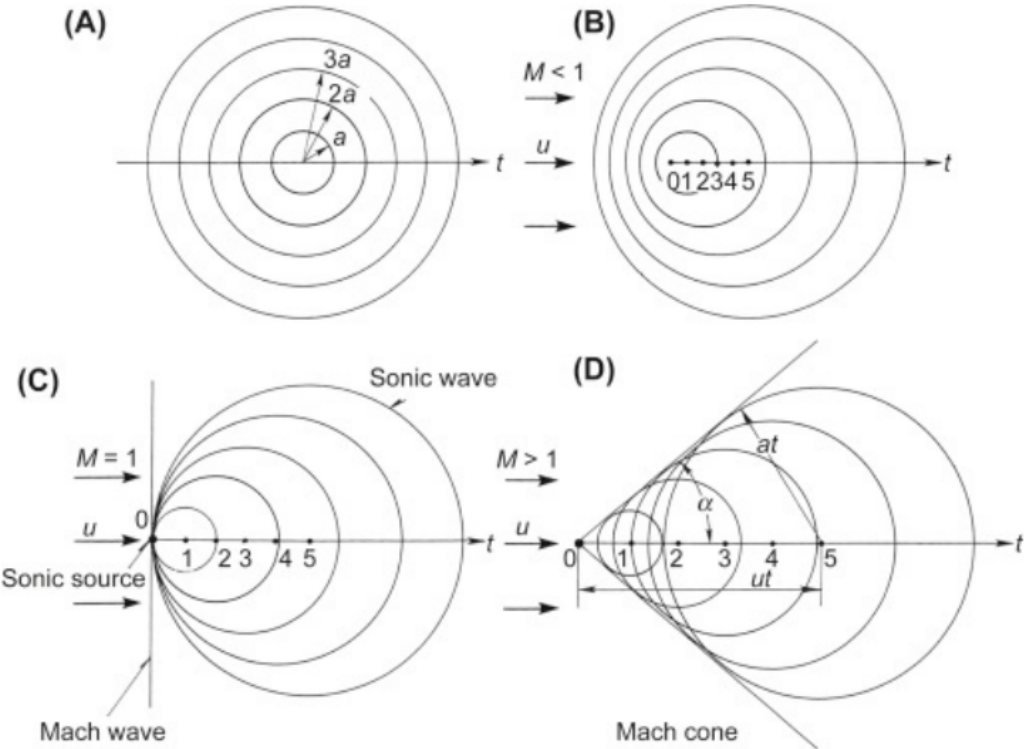
Summary of Supernovae

Type	Mechanism	Hydrogen lines	Compact Object Formation
Ia	Single-degenerate (WD accretion) or double-degenerate (WD-WD merger)	No	None
Ib	Core-collapse	No/Very weak	NS/BH. Possible relation to GRBs
Ic	Core-collapse	No	NS/BH. Possible relation to GRBs
II	Core-collapse	Yes	NS/BH

Supernova Remnants



Mach Number and Mach Cone



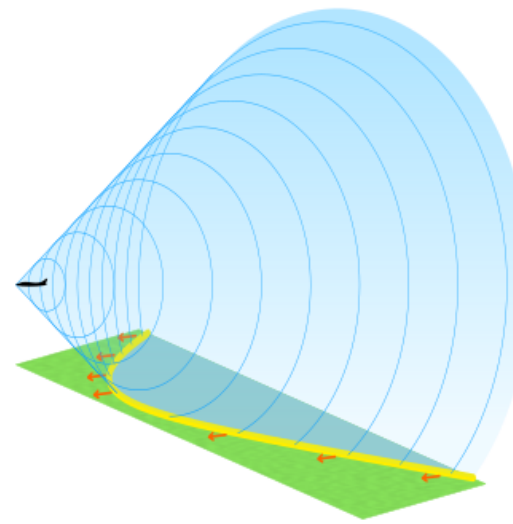
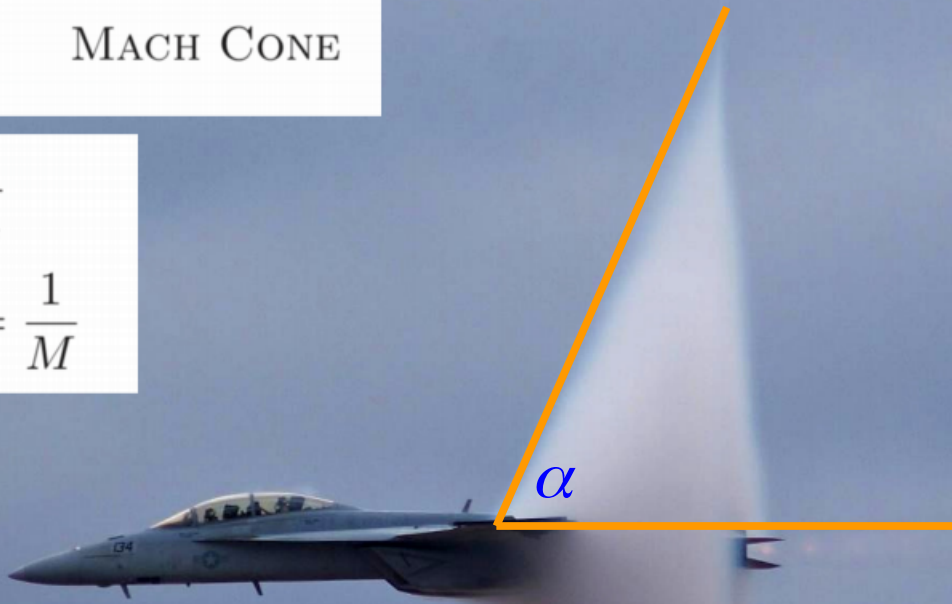
(A) & (B)
subsonic flow

(C) & (D)
supersonic flow

$$\sin \alpha = \frac{c_s}{v} \quad \text{MACH CONE}$$

$$M \equiv \frac{v}{c_s}$$

$$\therefore \sin \alpha = \frac{1}{M}$$



Adapted from
lecture of
Vasily Belokurov

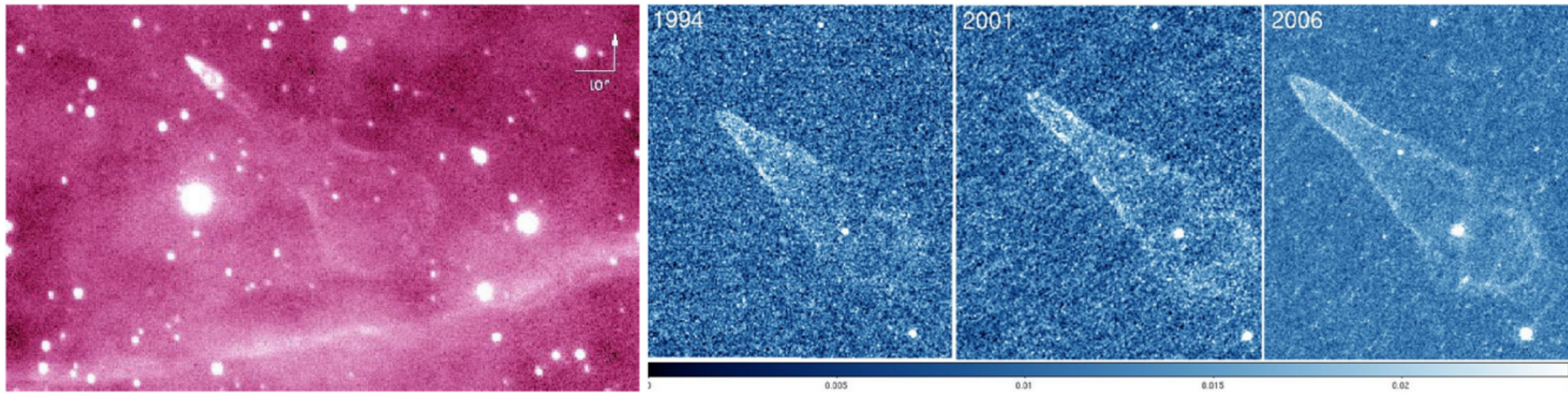


Figure 1. Left-hand panel: The Guitar Nebula in $H\alpha$, imaged with the 5-meter Hale Telescope at the Palomar Observatory, 1995 (Cordes et al. 1993). Right-hand panel: The head of the Guitar Nebula in $H\alpha$, imaged with the Hubble Space Telescope in 1994, 2001, and 2006 (Gautam et al. 2013). The change in shape traces out the changing density of the ISM.

Toropina, Romanova & Lovelace 2019, MNRAS 484, 1475

Supernova remnants (SNRs) - X-rays from shocks & search for ^{44}Ti (γ -rays and hard X-rays)

➤ **Supernova explosion: dense ejecta expanding at supersonic speed**

- KE (kinetic energy): 10^{51} erg ($1 \text{ foe} = 10^{51}$ erg)
- Ejected mass: $\sim 1.4 M_{\odot}$ (SNe Ia) ; $> 10 M_{\odot}$ (core collapse SNe)
- $v_{\text{ejecta}} \gg 10^4$ km/s

➤ **Phases of SNRs**

➤ **Free expansion** phase: ambient medium at rest, ejecta expanding supersonically → outward-propagating shock wave - *forward shock*

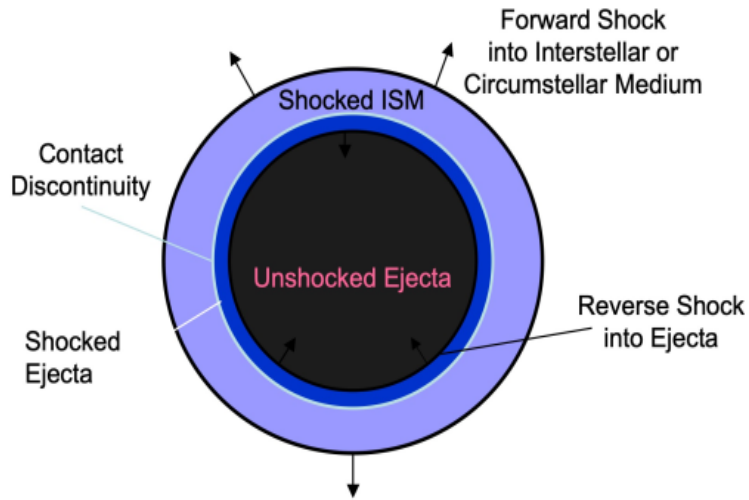
- When it has swept a significant amount of ambient medium mass, the forward shock begins to slow down (decelerate). Expanding matter (still in free expansion) collides with swept-up ambient medium → *reverse shock* formed, travelling inwards: heating of the ejecta (previously cooled by free expansion) → **thermal X-ray emission**

➤ **Adiabatic expansion phase** (non significant radiative losses): reverse shock disappears, once all ejecta have been heated. Mass swept-up by forward shock becomes larger than ejecta mass

➤ **Radiative phase** : once speed of forward shock decreases, T decreases (no X-ray emission anymore). Radiation becomes efficient. Shock wave decelerated; expansion driven by gas pressure instead of KE.

➤ **Dispersion into the ISM**

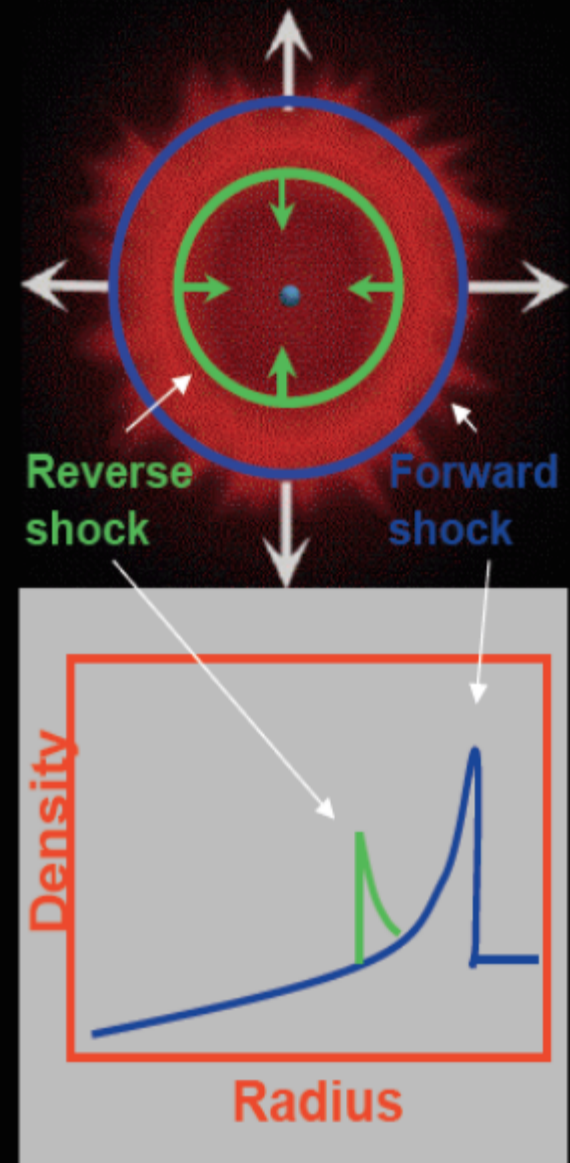
Cooling timescales are much longer than dynamical timescales, so this phase is essentially adiabatic e.g. net heat transfer is zero)



Forward shock: propagates in the circumstellar and then interstellar medium

Reverse shock: propagates into ejecta from the ISM inward (note: the reverse shock propagates outward in the lab frame and inward in the contact discontinuity lab frame).

The expanding shocked material outputs copious amounts **synchrotron radiation** due to the acceleration of **electrons** in the presence of a magnetic field. This expanding shell surrounds an **area** of relatively low density, into which the supernova ejecta expands freely, typically with velocities of around 10,000 km/s. This free expansion phase lasts for around 100/200 years until the **mass** of the material swept up by the shock wave exceeds the mass of the ejected material.



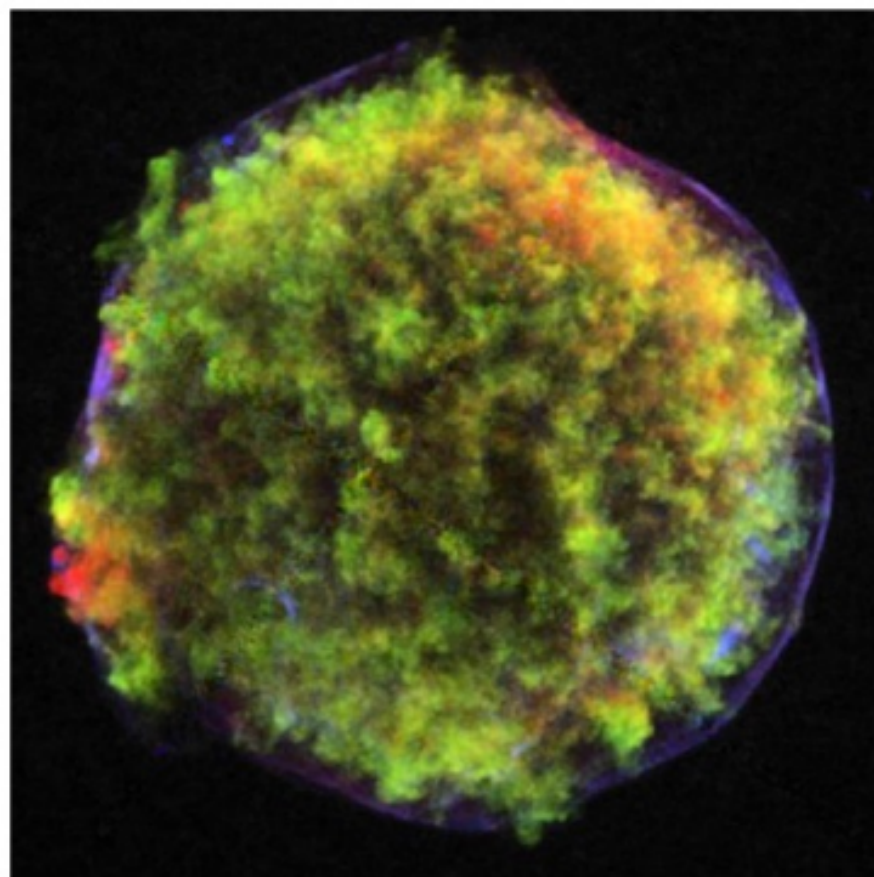
Remnant of the Tycho Brahe supernova (1572) seen in X-rays (Chandra satellite)

Page 4 of 120

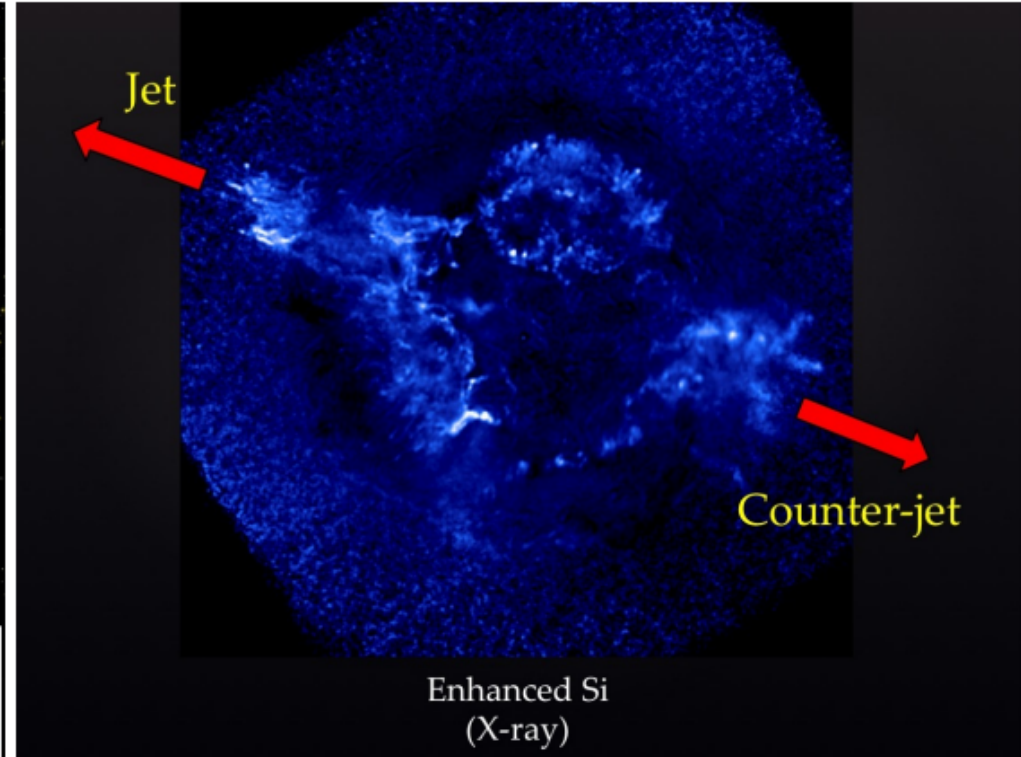
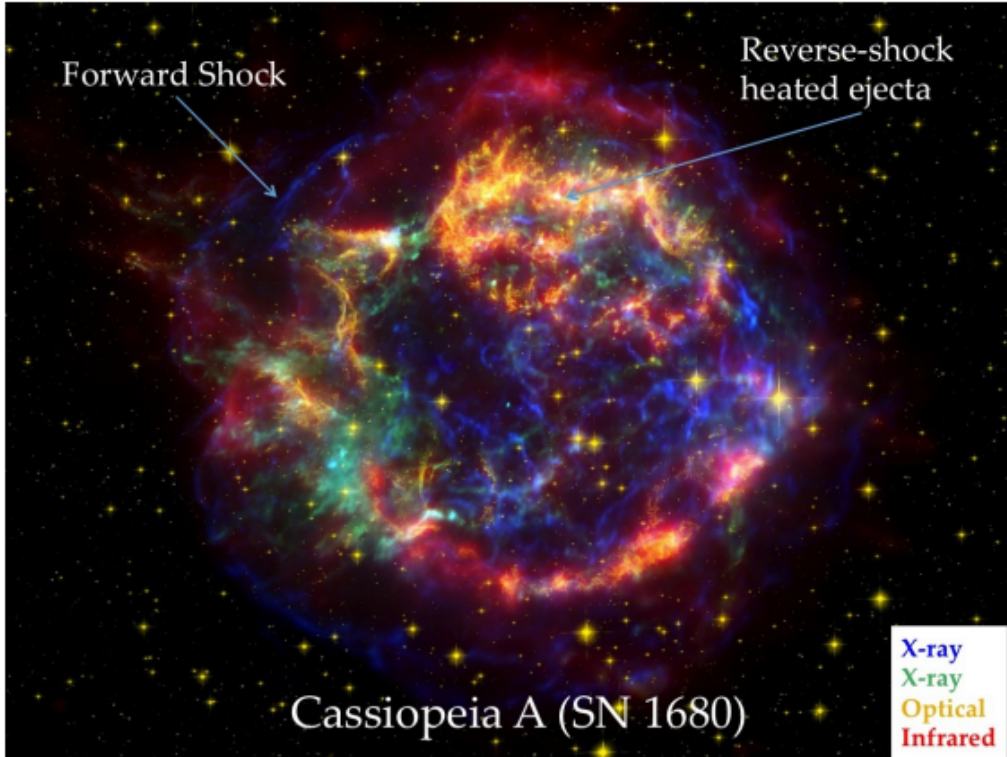
Astron Astrophys Rev (2012) 20:49

Fig. 1 Three-color *Chandra* image of Tycho's SNR (SN 1572/G120.1+1.4). The color *red* shows Fe-L-shell emission, *green* Si XIII, and *blue* continuum (4–6 keV). Note the very narrow continuum rims near the shock front (*blueish/purple* in this image), caused by X-ray synchrotron radiation from electrons with energies up to 100 TeV (image made by the author from *Chandra* data, see also Hwang et al. 2002; Warren et al. 2005)

Paper by J. Vink

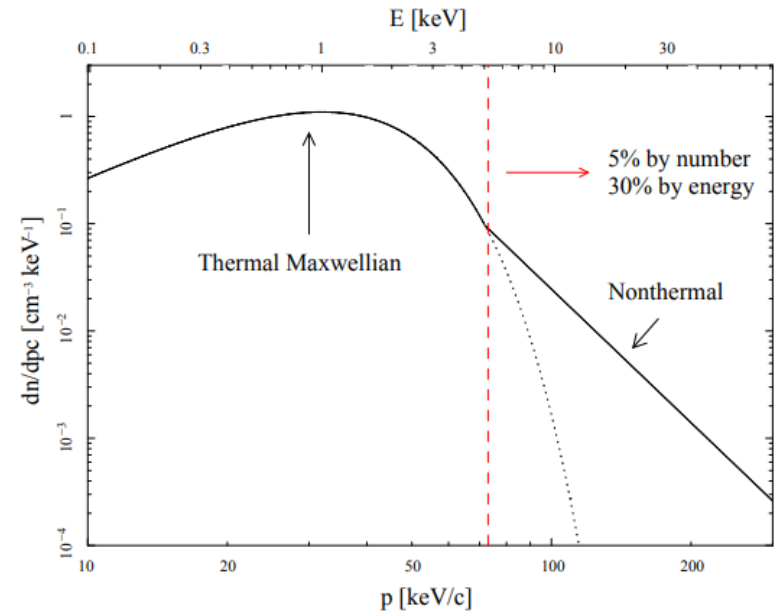
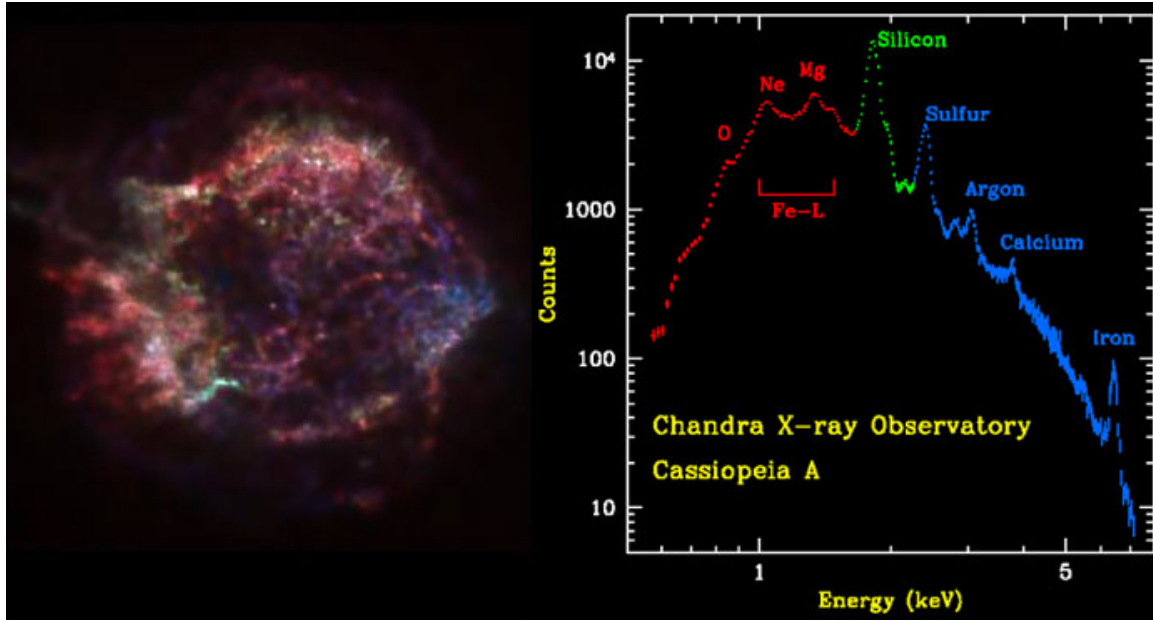


SNR Cas A: Shocks



Type II supernova

SNR Cas A: Bremsstrahlung continuum + lines

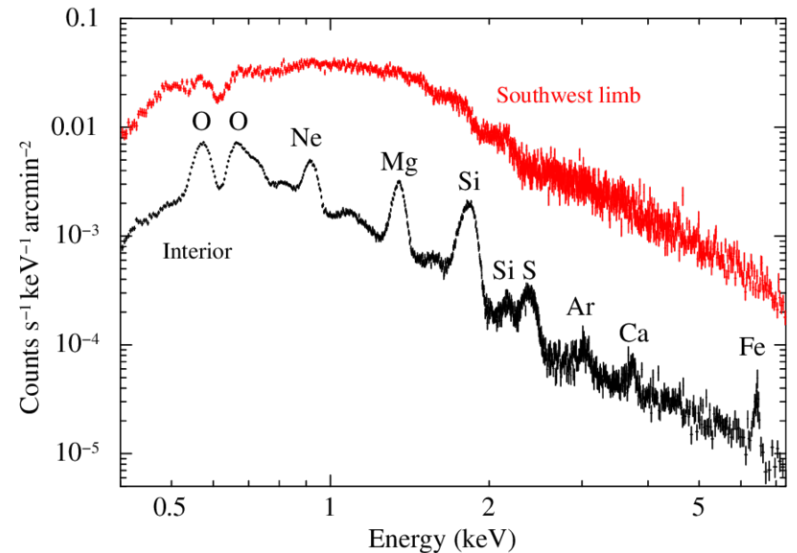


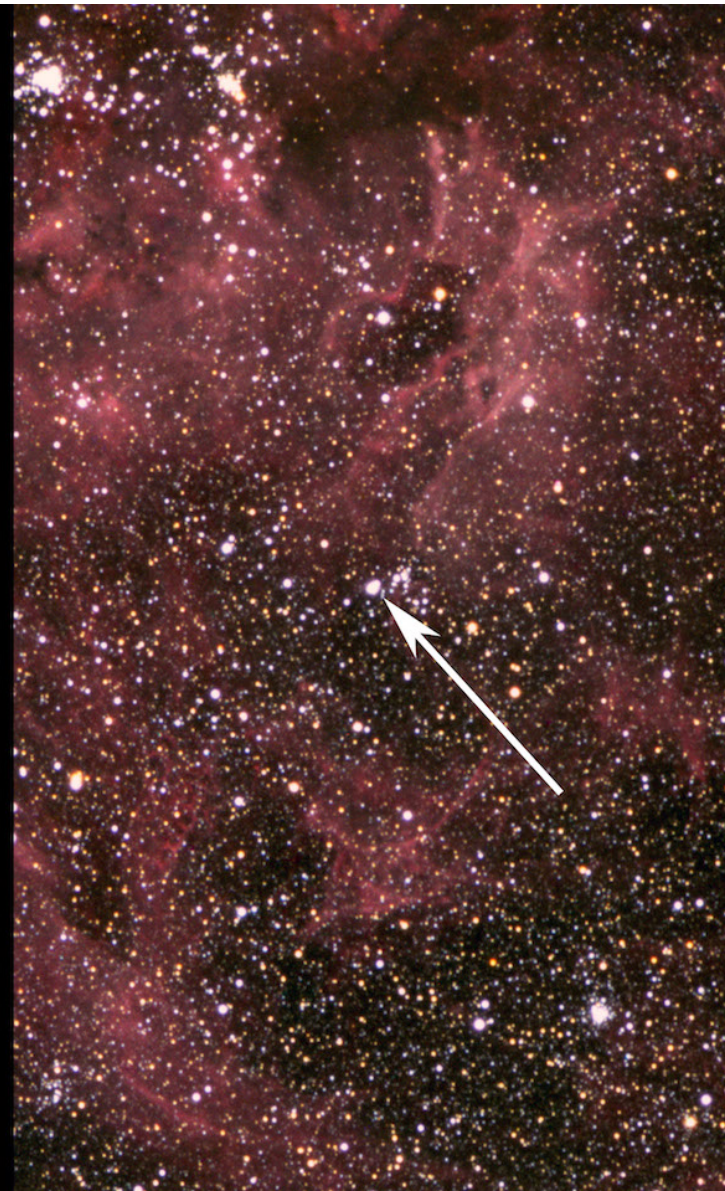
SNR formed after Type II supernova. High energy spectrum shows thermal continuum (bremsstrahlung) + a non-thermal tail. It could be due to either non-thermal bremsstrahlung or synchrotron (with $B \sim 0.1$ mG). Electron energies of ~ 57 -40 TeV. Inverse Compton/pion decay produces TeV radiation! (*Vink & Laming 2003*)



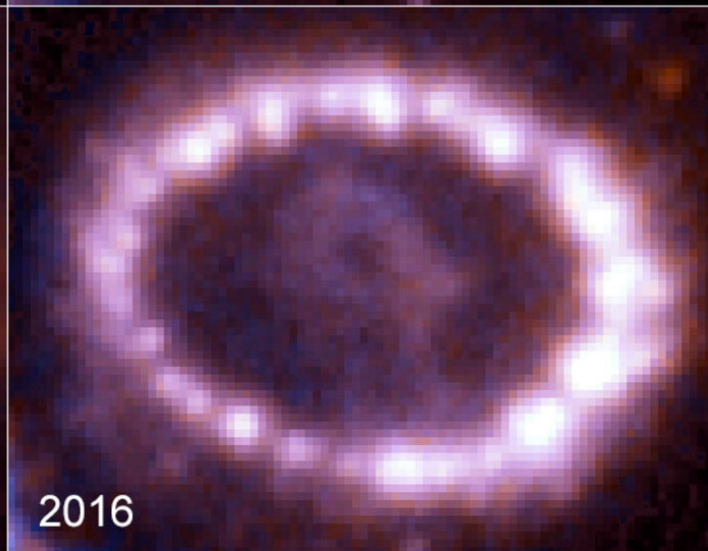
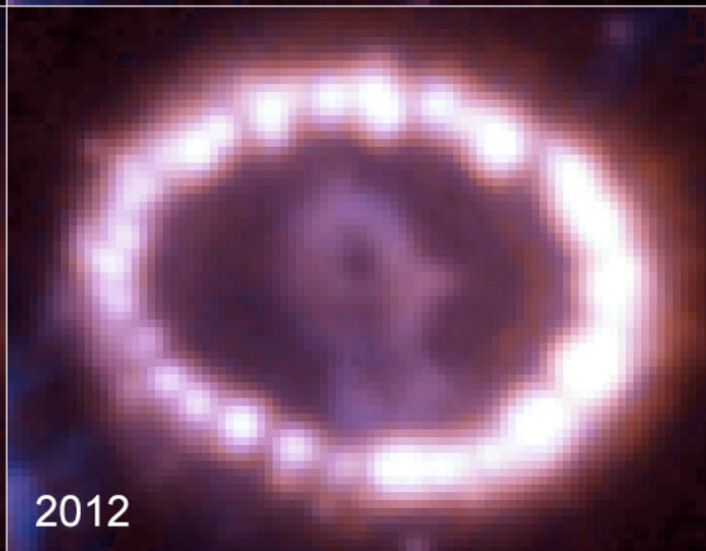
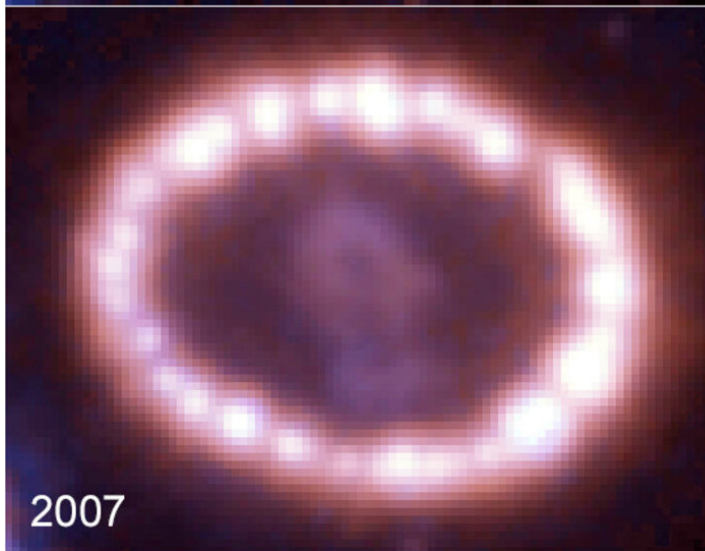
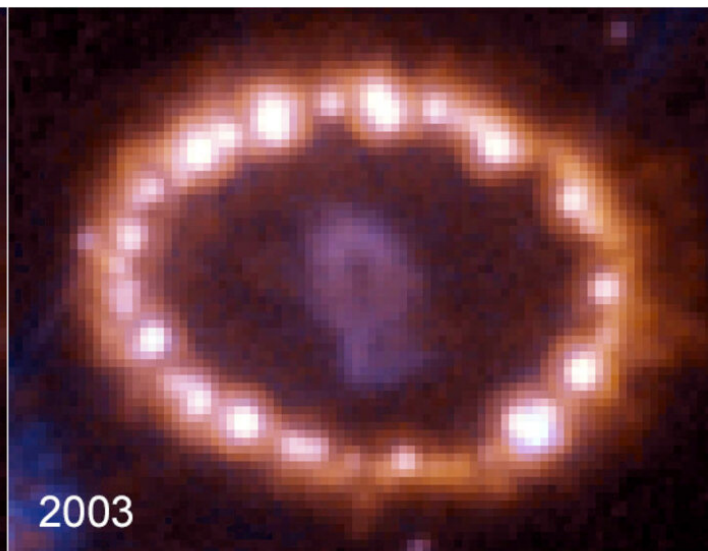
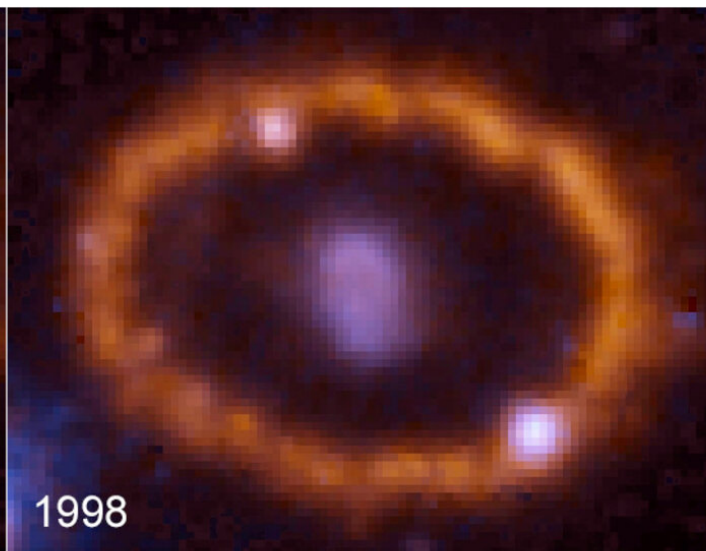
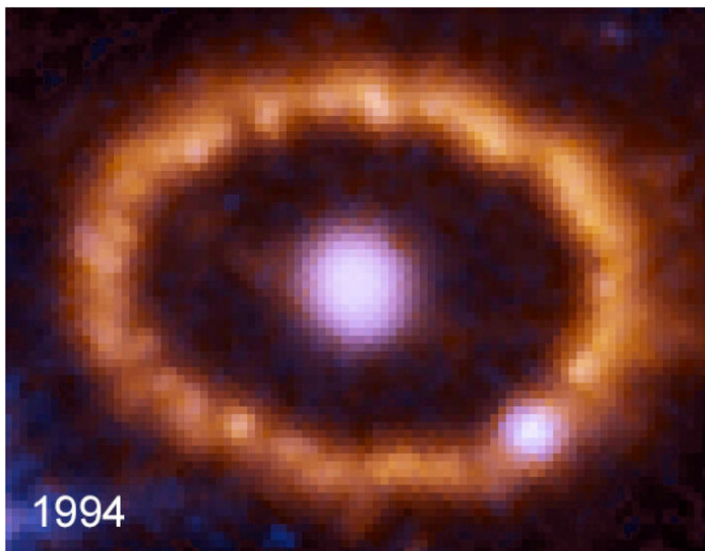
Origin of Cosmic Rays

SN 1006 is a Type Ia supernova remnant (consistent with the double degenerate formation scenario) which has been critical to understand how cosmic rays form.

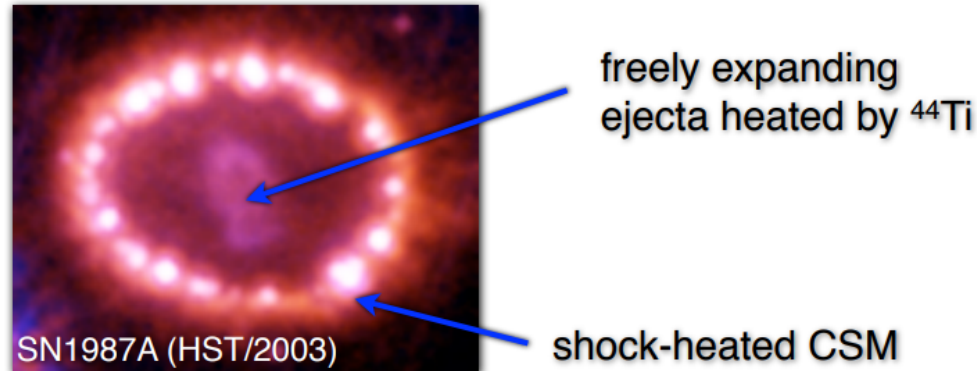




**SN 1987a
(core collapse)**



SN 1987a (Type II)



SN expands → ejecta cools → formation of dust

- Ejecta may still be warmed by late time radioactive heating (e.g., Ti-44)
- Depending on the circumstellar density

1. outer shock wave heats up a shell that may be detected in X-rays

2. shock wave may accelerate particles → relativistic electrons → radio emission

This happens if the CSM is dense enough which is a rare event → rarely seen in radio.

Summary on Supernova Remnants

	Ambient medium	Ejecta	Shock	Duration
1. Free Expansion	Mass swept up by forward shock \ll ejecta mass	supersonic expansion	Forward shock – Reverse shock formation	~few hundreds years
2. Adiabatic Expansion	Mass swept up by forward shock $>$ ejecta mass	supersonic expansion	Reverse shock disappears	~10,000 years
3. Radiative Phase	significant cooling	deceleration	forward shock significantly decelerates	~100,000 years
4. Dispersion to ISM				~ millions of years

Gamma Ray Bursts

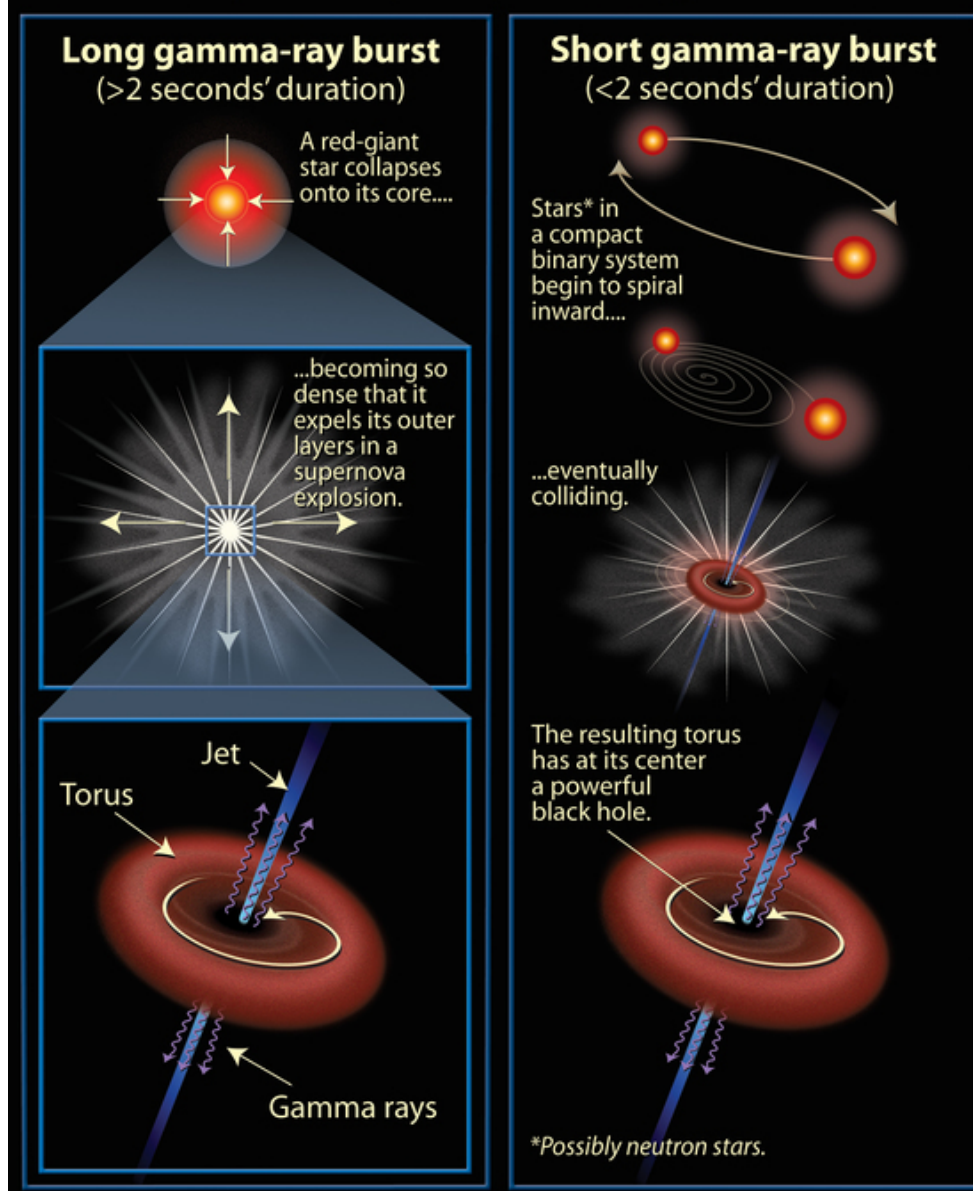
Gamma Ray Bursts

Two types: long & short

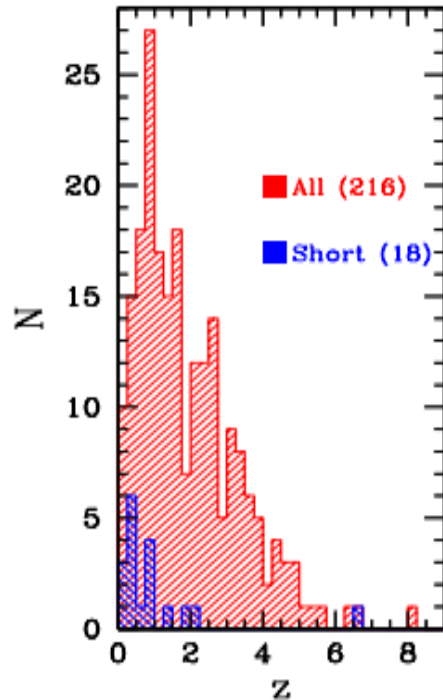
Long → core collapse of a massive star

Short → merger of two neutron stars

Following slides from: *Ghisellini 2010*



Gamma Ray Bursts are Cosmological

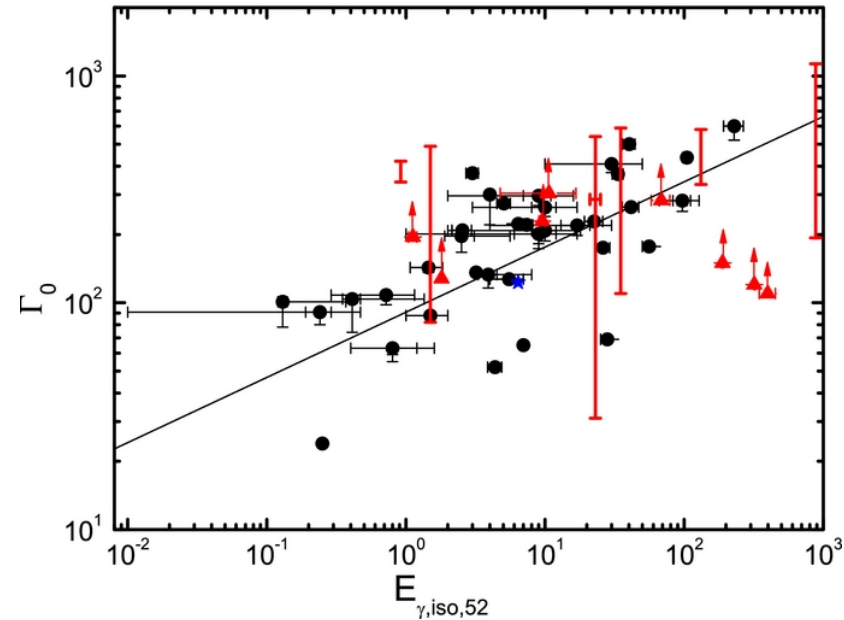


Highest $z \sim 8.1 \rightarrow$ age of the universe just 600 Myr!

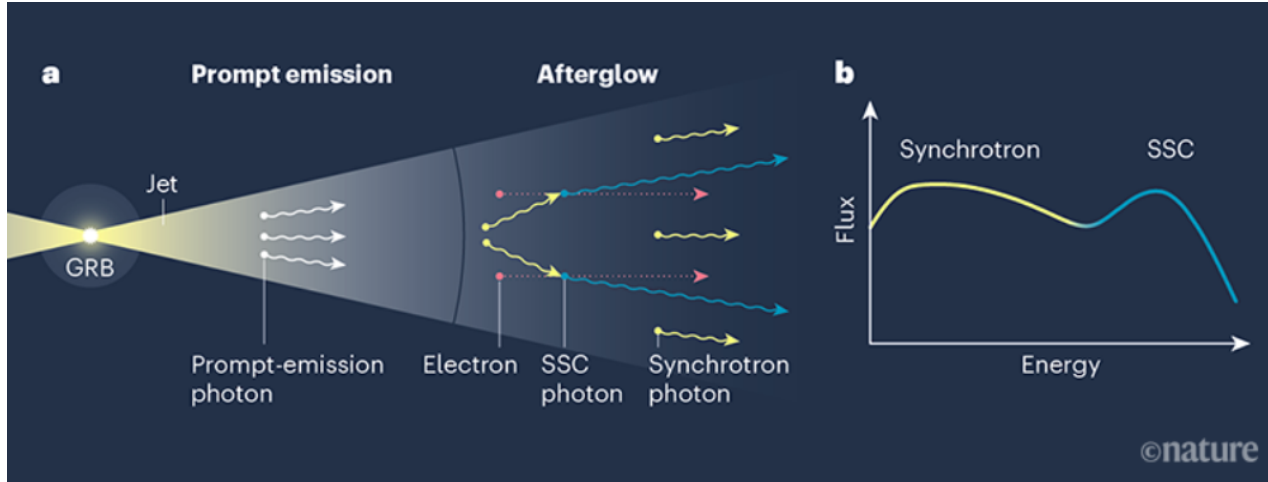
Assuming isotropic emission, the case of GRB990123 is really impressive: only in the gamma-ray domain, it released 3×10^{54} ergs, i.e. about twice the rest mass of the Sun. If one supposes a jet-like emission, the energy requirements are reduced by a factor of $\Omega/4\pi$ with respect to the spherical emission (Ω is the solid angle subtended by the emission cone). On this subject, searches for the so-called "orphan afterglows", corresponding to GRBs beamed away from our line of sight, have been performed, only providing limits on the beaming factor.

Gamma Ray Bursts are the fastest extended objects in the Universe

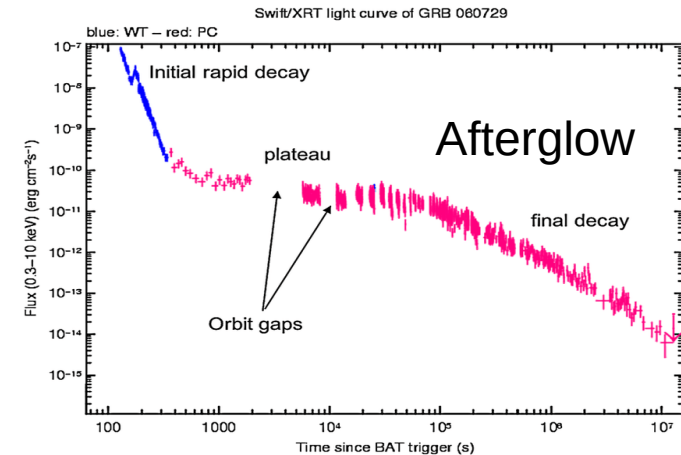
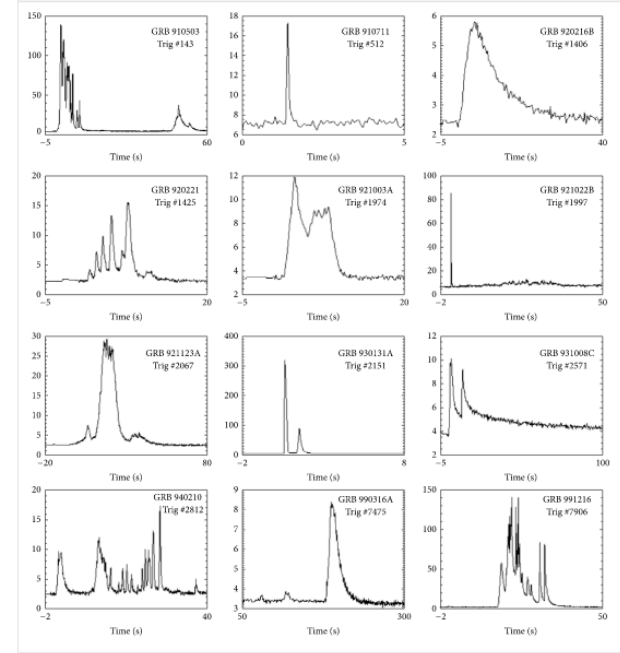
GRBs are the fastest extended objects of Nature, with bulk Lorentz factors Γ that can exceed 1000. The first evidence came from theory: injecting a colossal amount of energy in a small volume (of the order of a few Schwarzschild radii of size) leads inevitably to the formation of electron–positron pairs that makes the so–called “fireball” opaque to the huge internal pressure. The fireball is then obliged to expand, becoming relativistic with $\Gamma \propto R$ until the internal energy is converted into bulk motion (if the fireball remains opaque).



Prompt vs. Afterglow Emission

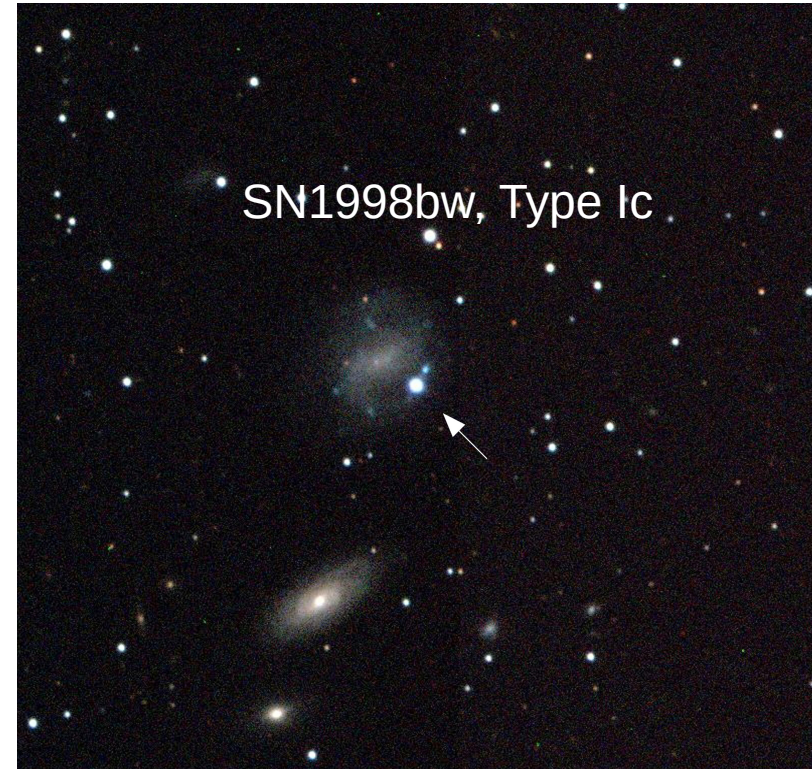


The GRB emission has two phases, the erratic, γ -ray (or hard X-ray) prompt phase, and a smoother afterglow phase. This means that not all the energy of the fireball is radiated away during the prompt, but some remains.



Progenitors

We believed that long GRBs are associated to Supernovae Ib,c, but not all SN Ib,c are associated to GRBs (Soderberg et al. 2006 estimated a fraction less than 1%). The evidence comes from spectroscopy (for nearby events) and re-brightening of the optical light curve (up to $z \sim 1$). The association strongly indicates that the progenitor of long GRBs is a massive stars, that has lost its hydrogen and helium envelopes. But there are at least two nearby bursts (GRB 060614, Gal-Yam et al. 2006, and GRB 060505, Ofek et al. 2007) where the SN was not found. If present, it would be at least two orders of magnitude less luminous than SN1998bw (associated to GRB 980425).





Candidate Progenitors in the Milky Way

WR 104 is a massive (25 Msun) Wolf-Rayet star in our galaxy. Its rotation axis was believed to be 16 degrees from Earth. This star might generate a GRB, in which case it would destroy 25% of Earth's atmosphere (despite $d = 2.6$ kpc).

More recent measurements indicate $i \sim 30\text{-}40$ deg so the beam of the jet would not be directed towards the solar system...

